



Contents lists available at ScienceDirect

Science Bulletin

journal homepage: www.elsevier.com/locate/scib

News & Views

Observed impacts of large wind farms on grassland carbon cycling

Donghai Wu^{a,b,*,1}, Steven M. Grodsky^{c,1}, Wenfang Xu^{a,1}, Naijing Liu^{d,1}, Rafael M. Almeida^e, Liming Zhou^f, Lee M. Miller^g, Somnath Baidya Roy^h, Geng Xiaⁱ, Anurag A. Agrawal^b, Benjamin Z. Houlton^{b,j}, Alexander S. Flecker^b, Xiangtao Xu^{b,*}

^a Key Laboratory of Vegetation Restoration and Management of Degraded Ecosystems, State Key Laboratory of Plant Diversity and Specialty Crops, Guangdong Provincial Key Laboratory of Applied Botany, South China Botanical Garden, Chinese Academy of Sciences, Guangzhou 510650, China

^b Department of Ecology and Evolutionary Biology, Cornell University, Ithaca NY 14853, USA

^c U.S. Geological Survey, New York Cooperative Fish and Wildlife Research Unit, Department of Natural Resources and the Environment, Cornell University, Ithaca NY 14853, USA

^d POWERCHINA Northwest Engineering Corporation Limited, Xi'an 710065, China

^e School of Earth, Environmental, and Marine Sciences, the University of Texas Rio Grande Valley, Edinburg TX 78539, USA

^f Department of Atmospheric and Environmental Sciences, University at Albany, Albany NY 12222, USA

^g Energy and Environment Directorate, Pacific Northwest National Lab, Richland WA 99354, USA

^h Centre for Atmospheric Science, Indian Institute of Technology Delhi, New Delhi 110016, India

ⁱ National Wind Technology Center, National Renewable Energy Laboratory, Golden CO 80401, USA

^j Department of Global Development, Cornell University, Ithaca NY 14853, USA

Deployment of wind energy is an essential renewable energy source that mitigates climate change and reduces air pollution [1]. Over the last several decades, wind energy development has increased worldwide, expanding from ~20 to ~900 GW (gigawatt) during 2001–2022 [1]. Nonetheless, researchers have identified unintended consequences of wind energy on microclimate via turbine-altered surface-atmosphere exchanges of energy, momentum, mass, and trace gases [2,3]. Based on multi-source observations and models, researchers also have drawn some conclusions that wind farms could warm the land surface, especially at night, at regional and continental scales [4,5]. Consequently, altered microclimates at wind farms may affect vegetation productivity and carbon sequestration, two critically important ecosystem services related to carbon dynamics; however, such potential impacts and driving mechanisms remain poorly understood [6]. Wind energy deployment is increasing globally to meet carbon neutrality goals, with upscaling of onshore wind power capacity projected to grow from 542 GW in 2018 to 1787 and 5044 GW by 2030 and 2050, respectively [7]. Increased demand for wind energy deployment may lead to much larger wind farms in open, expansive landscapes [7]. In turn, a large array of geographically clustered wind turbines could collectively modify local microclimate and amplify turbine-atmosphere interactions, which, if large enough, may produce detectable impacts on ecosystem dynamics. Thus, identifying and quantifying the potential impacts of wind farms on carbon-related ecosystem services may facilitate sustainable wind energy development globally.

Currently, China is the world leader in wind energy deployment, accounting for one-third of global installed capacity [8]. Total installed capacity has been rapidly growing in China over

the last two decades, increasing from less than 1 GW in 2001 to nearly 200 GW in 2018 (Fig. S1 online), and ~334 GW in 2022 [1]. China's northern grasslands are considered prime environments for wind energy deployment because they provide abundant and accessible onshore wind resources [9]. Compared to the United States (<https://eerscmmap.usgs.gov/uswtodb>), where most wind farms are co-located with croplands, wind farms in northern China's grasslands experience less human disturbance (e.g., no agricultural irrigation and fertilizer use), providing a unique opportunity to assess wind energy impacts on carbon-related ecosystem services (Fig. S2 online).

(i) *Impacts of wind farms on vegetation growth.* We evaluated the effects of wind farms (i.e., array of geographically clustered wind turbines; Methods) on grassland growth during peak growing season (June–August; Fig. S3 online), using time series of the normalized difference vegetation index (NDVI) from moderate-resolution imaging spectroradiometer (MODIS) during 2001–2018. We calculated NDVI anomaly as the difference in NDVI between wind farms and nearby control regions with similar local environmental conditions but no turbines (Figs. S4 and S5; Tables S1–S5 online). We quantified the effects of wind farms on vegetation growth by calculating the changes in NDVI anomaly during 2001–2018 (denoted as Δ NDVI; Methods; Fig. S6 online). We found that eleven out of the sixteen (~70%) wind farms exhibited reduced grassland growth over time, as indicated by negative Δ NDVI (Fig. S7 online). Reductions in grassland growth were exacerbated by the size of wind farms (Fig. 1a), with stronger negative Δ NDVI at large wind farms (>1000 turbines). The spatial variation of Δ NDVI was not correlated with spatial heterogeneity in climate (i.e., temperature, precipitation, and vapor pressure deficit), elevation, vegetation cover, and density of clustered wind turbines (Fig. S8 online), which suggests that the size of wind farms (i.e., number of the clustered wind turbines) primarily drove reductions in grassland growth. These findings are further corroborated by additional

* Corresponding authors.

E-mail addresses: donghaiwu@scbg.ac.cn (D. Wu), xx286@cornell.edu (X. Xu).

¹ These authors contributed equally to this work.

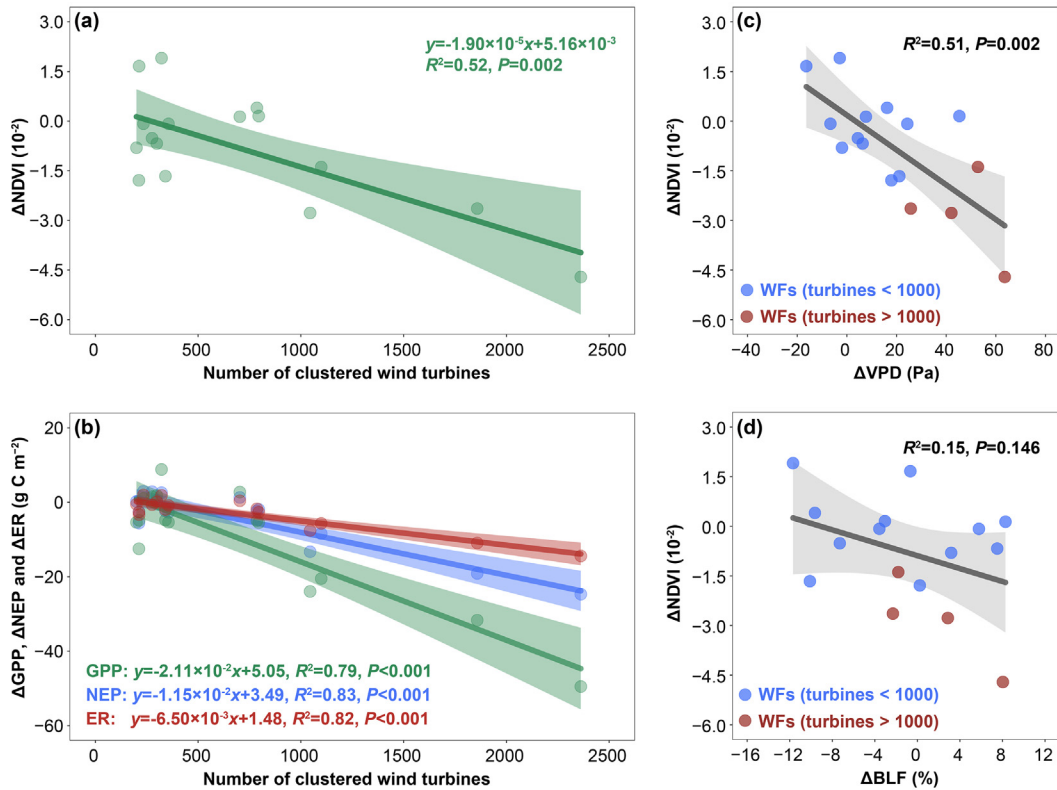


Fig. 1. Impacts of wind farms on vegetation growth and carbon cycling in peak growing season. (a) Relationship between the number of turbines and the MODIS Δ NDVI (the normalized difference vegetation index) across the sixteen wind farms. (b) Relationship between the number of turbines and Δ NEP (net ecosystem productivity), Δ GPP (gross primary productivity), and Δ ER (ecosystem respiration) across the sixteen wind farms. (c) Relationship between MODIS Δ NDVI and Δ VPD (vapor pressure deficit) across the sixteen wind farms. (d) Relationship between MODIS Δ NDVI and Δ BLF (bare land fraction) across the sixteen wind farms. The grey shaded area represents 95% confidence interval of the linear regression.

vegetation metrics sourced from multiple satellite platforms (Figs. S9 and S10 online).

(ii) *Impacts of wind farms on carbon sequestration.* To explore the implications of reduced grassland growth at wind farms for regional ecosystem carbon sequestration, we evaluated the net ecosystem productivity (NEP), estimated as the difference between gross primary productivity (GPP) and ecosystem respiration (ER) [10]. Following the same time-series analysis (see Methods), we defined Δ GPP, Δ NEP, and Δ ER as the changes of GPP, NEP, and ER anomaly during 2001–2018, respectively. Our results show a strong, negative relationship between the size of wind farms and Δ NEP (Fig. 1b; $R^2 = 0.83$), indicating that losses of ecosystem carbon sequestration enlarge most at the largest wind farms. In comparison to multi-year mean carbon sequestration, relative carbon sequestration loss can reach 50% at the largest wind farms (Fig. S11 online). Negative Δ NEP is primarily driven by decreases in GPP rather than ER (Fig. 1b). Further assessment of effects on carbon sequestration outside of the peak growing season corroborated that reductions in carbon sequestration primarily occurred during the growing season (Fig. S12 online) rather than in the non-growing season (Fig. S13 online).

(iii) *Mechanisms of the impacts on vegetation growth.* In arid and semi-arid grasslands, natural vegetation dynamics are constrained by both soil and atmospheric water availability [11], and local hydrometeorological factors affected by the presence of wind farms may influence grassland growth. Thus, using the same time-series analysis for vegetation growth (see Methods), we investigated the effects of wind farms on the local hydrometeorological factors that can affect grassland growth, including precipitation, soil moisture, and vapor pressure deficit (VPD)—an atmospheric dryness metric

calculated as the difference between saturated vapor pressure and actual vapor pressure (see Methods). Wind farms showed no effects on peak growing season precipitation and soil moisture but significant impacts on VPD (Figs. S14 and S15 online). Specifically, Δ VPD (i.e., changes of VPD anomaly during 2001–2018) at large wind farms (>1000 turbines, ~ 46 Pa) showed a greater increase than small and medium wind farms (<1000 turbines, ~ 10 Pa). Further, we found that increased saturated vapor pressure and decreased actual vapor pressure contributed equally to local atmospheric drying at large wind farms (Fig. S16 online). The increased saturated vapor pressure may be a result of local warming due to turbine-enhanced turbulence, which can alter vertical heat distribution in the atmospheric boundary layer and ultimately raise near-surface temperature [4]. This local warming may also be linked to less land surface cooling by reduced evapotranspiration (Figs. S14 and S15 online). The decrease in actual vapor pressure is likely caused by turbine-enhanced turbulence as well, which brings drier air in the upper atmospheric boundary layer to the near-surface [2] and thereby decreases air humidity (Fig. S16 online).

We determined that turbine-induced atmospheric drying can largely explain reduced grassland growth across all wind farms (Fig. 1c; $R^2 = 0.51$). Specifically, stronger reductions in grassland growth at larger wind farms are associated with greater increases in VPD. In water-limited grasslands, vegetation growth is highly constrained by atmospheric moisture conditions [12]. Leaf stomata close in response to atmospheric drying, which can limit photosynthesis and growth [13]. We verified the negative impact of atmospheric drying on grassland growth in subsequent analyses of other vegetation metrics from various satellite platforms (Fig. S17 online).

Aside from the climatic impacts of wind farms, we also quantified effects of land-use change (i.e., increased bare land fraction, BLF) on vegetation growth at the wind farms. We found a weak relationship between Δ BLF (i.e., changes of BLF anomaly during 2001–2018) and Δ NDVI (Fig. 1d), and the Δ BLF explains \sim 10% of changes in grassland growth as inferred from a range of vegetation indices (Fig. S18 online). The lack of a strong signal of land-use change on grassland growth is likely due to the relatively small footprint of individual turbines compared to the large, inter-turbine spacing extending hundreds of meters to optimize wind farm efficiency [14]. Thus, we conclude that atmospheric drying could be the main driver of reduced grassland growth, as confirmed by a multiple regression model considering both Δ VPD and Δ BLF as independent variables (Fig. S19 online).

(iv) *Issues and perspectives.* Our work mainly detected the impacts of wind farms on vegetation growth and carbon cycling using multi-source remote sensing datasets. In addition to vegetation productivity, since wind farms are widely observed to increase near-surface temperature in their host ecosystems [4,5], wind farms may affect the microbial decomposition of soil organic carbon. Thus, long-term field experiments and flux observations are highly recommended to detect the possible impacts and background mechanisms [6]. In addition, given that the current meso-scale weather research and forecasting (WRF) model has integrated the effects of wind farms on the local climate [6], coupling the climate model and ecosystem model should be developed on a high priority to provide simulations and predictions of the wind farm impacts on ecosystem carbon cycling at large spatial scales [3,5].

To dive into detailed mechanisms of the wind farm impacts on local environments, we require more public datasets in terms of the wind turbine information (e.g., construction time, nominal power, and operation periods) and wind farm microclimate (e.g., wind direction and wind speed). The information can also help to optimize the methods in our study and reduce the potential uncertainties. Currently, the United States Wind Turbine Database (USWTDB) has provided the geolocations and construction time of all wind turbines in the United States (<https://eerscmapp.usgs.gov/uswtddb/>), while there are still no available datasets of wind turbines in China. Given that our view paper highlights the importance of identifying and quantifying wind farms' potential impacts on carbon-related ecosystem services, our work can help call for public wind turbine datasets from energy departments.

In summary, we show here that large wind farms decrease vegetation productivity and cause losses in carbon sequestration, indicating a previously unknown trade-off between wind energy production and carbon-related ecosystem services. The need to meet net-zero emission targets by mid-century leads to much larger arrays of geographically clustered wind turbines in open, expansive landscapes [7]. This trend towards larger wind farms may amplify turbine-induced atmospheric drying (Fig. S20 online), increasing water stress on local vegetation productivity. Understanding and assessing these unintended consequences of large-scale wind energy development for ecosystems and their services can facilitate efficient adaptation and management strategies for a sustainable energy future [15].

Conflict of interest

The authors declare that they have no conflict of interest. The views expressed in the article do not necessarily represent the views of the DOE or the U.S. Government. The U.S. Government retains and the publisher, by accepting the article for publication, acknowledges that the U.S. Government retains a nonexclusive, paid-up, irrevocable, worldwide license to publish or reproduce the published form of this work, or allow others to do so, for U.S. Government purposes. Any use of trade, firm, or product names is

for descriptive purposes only and does not imply endorsement by the U.S. Government.

Acknowledgments

This work was supported by the Key Research and Development Program of Guangdong Province (2022B1111230001), South China Botanical Garden, Chinese Academy of Sciences (QNXM-202308 and 2023000051) and the National Natural Science Foundation of China (42201055). This work was authored in part by the National Renewable Energy Laboratory, operated by Alliance for Sustainable Energy, LLC (Limited Liability Company), for the U.S. Department of Energy (DOE) under Contract No. DE-AC36-08GO28308. Funding provided by the U.S. Department of Energy Office of Energy Efficiency and Renewable Energy Wind Energy Technologies Office. We thank Prof. Susan Ustin at University of California, Davis, and Prof. Robert W. Howarth at Cornell University for providing comments on an earlier version of our manuscript.

Appendix A. Supplementary materials

Supplementary materials to this news & views can be found online at <https://doi.org/10.1016/j.scib.2023.10.016>.

References

- [1] Global Wind Energy Council (GWEC). Global wind report. 2023, <https://gwec.net/globalwindreport2023>
- [2] Roy SB, Pacala SW, Walko RL. Can large wind farms affect local meteorology? *J Geophys Res: Atmos* 2004;109:D19101.
- [3] Keith DW, DeCarolis JF, Denkenberger DC, et al. The influence of large-scale wind power on global climate. *Proc Natl Acad Sci USA* 2004;101:16115–20.
- [4] Zhou L, Tian Y, Roy SB, et al. Impacts of wind farms on land surface temperature. *Nat Clim Chang* 2012;2:539–43.
- [5] Miller LM, Keith DW. Climatic impacts of wind power. *Joule* 2018;2:2618–32.
- [6] Zhou L, Roy SB, Xia G. *Weather, climatic and ecological impacts of onshore wind farms*. Berlin: Elsevier; 2020.
- [7] International Renewable Energy Agency (IRENA). *Future of wind: deployment, investment, technology, grid integration and socio-economic aspects*. 2019, <https://www.irena.org/publications/2019/Oct/Future-of-wind>
- [8] Zhang S, Wei J, Chen X, et al. China in global wind power development: role, status and impact. *Renew Sust Energy Rev* 2020;127:109881.
- [9] Lu X, McElroy MB, Peng W, et al. Challenges faced by China compared with the US in developing wind power. *Nat Energy* 2016;1:16061.
- [10] Jung M, Schwalm C, Migliavacca M, et al. Scaling carbon fluxes from eddy covariance sites to globe: synthesis and evaluation of the fluxcom approach. *Biogeosciences* 2020;17:1343–65.
- [11] Nemani RR, Keeling CD, Hashimoto H, et al. Climate-driven increases in global terrestrial net primary production from 1982 to 1999. *Science* 2003;300:1560–3.
- [12] Grossiord C, Buckley TN, Cernusak LA, et al. Plant responses to rising vapor pressure deficit. *New Phytol* 2020;226:1550–66.
- [13] Yuan W, Zheng Y, Piao S, et al. Increased atmospheric vapor pressure deficit reduces global vegetation growth. *Sci Adv* 2019;5:eaax1396.
- [14] Shen G, Xu B, Jin Y, et al. Monitoring wind farms occupying grasslands based on remote-sensing data from China's GF-2 HD satellite—a case study of Jiuquan city, Gansu Province, China. *Resour Conserv Recycl* 2017;121:128–36.
- [15] Grodsky SM. Matching renewable energy and conservation targets for a sustainable future. *One Earth* 2021;4:924–6.



Donghai Wu is a professor at the South China Botanical Garden, Chinese Academy of Sciences. He received his Ph.D. degree from Peking University in 2019. He worked as a postdoc at Department of Ecology and Evolutionary Biology, Cornell University during 2019–2023. His research interest focuses on global change and the terrestrial carbon cycle.

D. Wu et al.

Science Bulletin xxx (xxxx) xxx



Steven M. Grodsky is an assistant professor at the Department of Natural Resources and the Environment, Cornell University. He received his Ph.D. degree from the North Carolina State University. He specializes in the emerging field of energy ecology—the study of interactions among energy development, ecosystems, and people.



Naijing Liu is a joint postdoc at POWERCHINA North-west Engineering Corporation Limited and Beijing Normal University. He received his Ph.D. degree from the Beijing Normal University in 2023. His research interest focuses on the interactions between renewable energies and local environments.



Wenfang Xu is an associate professor at the South China Botanical Garden, Chinese Academy of Sciences. She received her Ph.D. degree at the Northwest Institute of Eco-Environment and Resources, Chinese Academy of Sciences in 2018. Her research interest mainly focuses on how vegetation growth responds to climate change and extreme climate.



Xiangtao Xu is an assistant professor at the Department of Ecology and Evolutionary Biology, Cornell University. He received his Ph.D. degree from Princeton University. His research interest focuses on the patterns, mechanisms, and consequences of vegetation-environment interactions, especially in the context of novel climate regimes under the on-going global change.